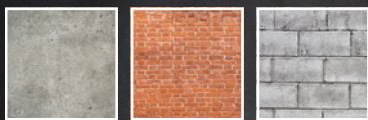


STRONG-POINT Strongcon®

STRONG-POINT®

Attach wood or metal to concrete, brick or cement block with confidence, using our **Professional-Grade Strongcon** screws.

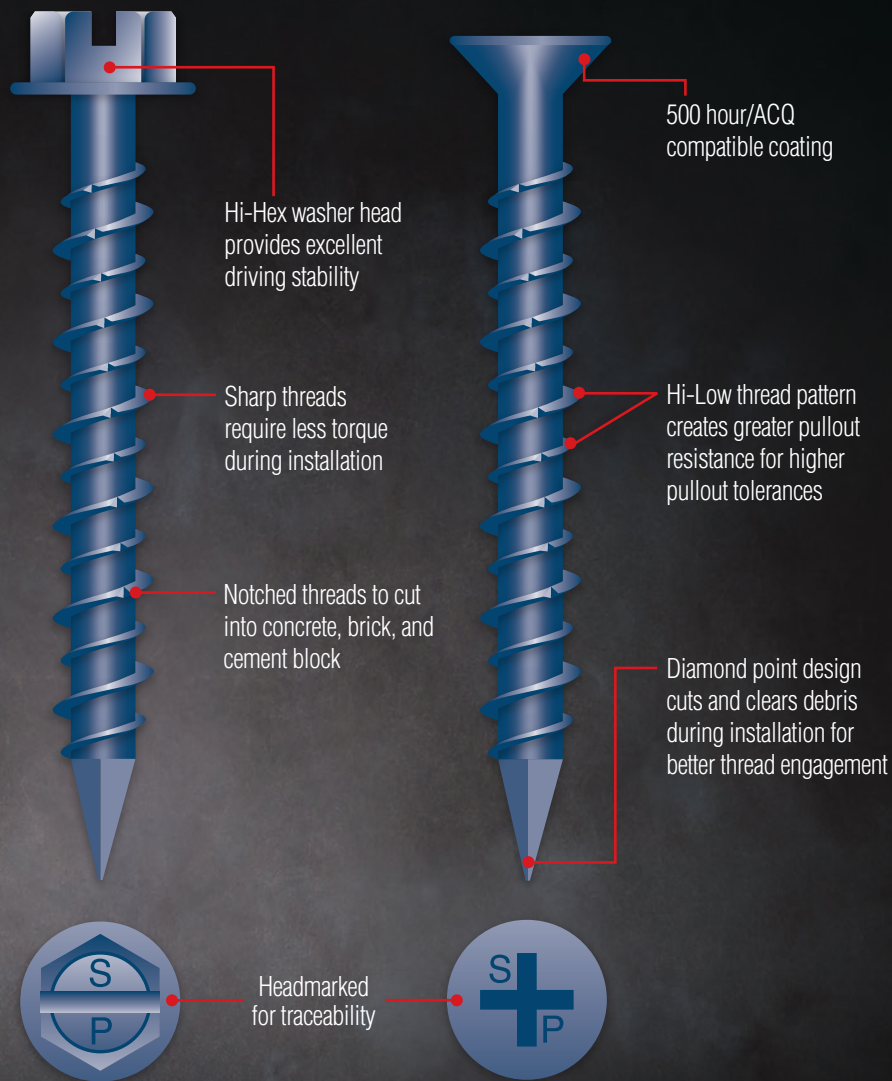


NEW LONGER LENGTHS NOW AVAILABLE

1/4 x 5" and 1/4 x 6" both in HEX WASHER HEAD & FLAT HEAD

AVAILABLE IN BULK or PACKAGED QUANTITIES

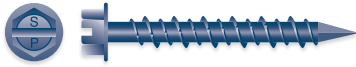
Nationally Recognized Approval Rating



6608 Brittmoore Road, #100
Houston, TX 77041

713-462-8882 Ph • 713-462-8883 Fax
sales@fastmasterinc.com • www.fastmasterinc.com

Slotted Indented Hex Washer Head, Hi-Low, Notched Threads, Diamond Point, Blue Ceramic Coating



- Meets ASTM A 510 for carbon steel manufacturing
- Exceeds 500/hrs. salt spray resistance
- ACQ Compatible



Material Application
Attaches wood or metal to concrete, brick, cement block or masonry.

- Notched threads for cutting into concrete, brick and cement block
- Miami-Dade County Product Control Approved. NOA-15-0930.14

| Size | Bulk Part No | Bulk Qty | Lbs* | Head Size | Fixture Thickness | Fixture Recommended Drill Bit | Packaged Part No | Qty** |
|--------------|-------------------|----------|------|------------|-------------------|-------------------------------|------------------|-------|
| 3/16 x 1-1/4 | CH320 | 5M | 41 | 1/4" A.F. | 0 - 1/4" | 5/32 x 3-1/2" | PCH320 | 500 |
| 3/16 x 1-3/4 | CH328 | 3M | 32 | 1/4" A.F. | 1/4" - 3/4" | 5/32 x 3-1/2" | PCH328 | 500 |
| 3/16 x 2-1/4 | CH336 | 2.5M | 32 | 1/4" A.F. | 3/4" - 1-1/4" | 5/32 x 4-1/2" | PCH336 | 500 |
| 3/16 x 2-3/4 | CH344 | 2M | 32 | 1/4" A.F. | 1-1/4" - 1-3/4" | 5/32 x 4-1/2" | PCH344 | 500 |
| 3/16 x 3-1/4 | CH352 | 1.5M | 28 | 1/4" A.F. | 1-3/4" - 2-1/4" | 5/32 x 5-1/2" | PCH352 | 500 |
| 3/16 x 3-3/4 | CH360 | 1M | 21 | 1/4" A.F. | 2-1/4" - 2-3/4" | 5/32 x 5-1/2" | PCH360 | 500 |
| 3/16 x 4 | CH364 | 1M | 23 | 1/4" A.F. | 2-1/2" - 3" | 5/32 x 5-1/2" | PCH364 | 500 |
| 1/4 x 1-1/4 | CH420 | 3M | 36 | 5/16" A.F. | 0 - 1/4" | 3/16 x 3-1/2" | PCH420 | 500 |
| 1/4 x 1-3/4 | CH428 | 2M | 33 | 5/16" A.F. | 1/4" - 3/4" | 3/16 x 3-1/2" | PCH428 | 500 |
| 1/4 x 2-1/4 | CH436 | 1.5M | 30 | 5/16" A.F. | 3/4" - 1-1/4" | 3/16 x 4-1/2" | PCH436 | 500 |
| 1/4 x 2-3/4 | CH444 | 1M | 25 | 5/16" A.F. | 1-1/4" - 1-3/4" | 3/16 x 4-1/2" | PCH444 | 500 |
| 1/4 x 3-1/4 | CH452 | 1M | 29 | 5/16" A.F. | 1-3/4" - 2-1/4" | 3/16 x 5-1/2" | PCH452 | 500 |
| 1/4 x 3-3/4 | CH460 | .5M | 17 | 5/16" A.F. | 2-1/4" - 2-3/4" | 3/16 x 5-1/2" | PCH460 | 500 |
| 1/4 x 4 | CH464 | .5M | 18 | 5/16" A.F. | 2-1/2" - 3" | 3/16 x 5-1/2" | PCH464 | 500 |
| 1/4 x 5 | NEW! CH480 | .5M | 22 | 5/16" A.F. | 3-1/4" - 4" | 3/16 x 6-1/2" | N/A | N/A |
| 1/4 x 6 | NEW! CH496 | .5M | 26 | 5/16" A.F. | 4-1/4" - 5" | 3/16 x 7-1/2" | N/A | N/A |

**5 boxes packaged 100 per box. One drill bit included per box.

Phillips Flat Head, Hi-Low, Notched Threads, Diamond Point, Blue Ceramic Coating



- Meets ASTM A 510 for carbon steel manufacturing
- Exceeds 500/hrs. salt spray resistance
- ACQ Compatible



Material Application
Attaches wood or metal to concrete, brick, cement block or masonry.

- Notched threads for cutting into concrete, brick and cement block
- Miami-Dade County Product Control Approved. NOA-15-0930.14

| Size | Bulk Part No | Bulk Qty | Lbs* | Head Size | Fixture Thickness | Fixture Recommended Drill Bit | Packaged Part No | Qty** |
|--------------|-------------------|----------|------|------------|-------------------|-------------------------------|------------------|-------|
| 3/16 x 1-1/4 | CF320 | 5M | 35 | 1/4" A.F. | 0 - 1/4" | 5/32 x 3-1/2" | PCF320 | 500 |
| 3/16 x 1-3/4 | CF328 | 4M | 39 | 1/4" A.F. | 1/4" - 3/4" | 5/32 x 3-1/2" | PCF328 | 500 |
| 3/16 x 2-1/4 | CF336 | 2.5M | 31 | 1/4" A.F. | 3/4" - 1-1/4" | 5/32 x 4-1/2" | PCF336 | 500 |
| 3/16 x 2-3/4 | CF344 | 2M | 29 | 1/4" A.F. | 1-1/4" - 1-3/4" | 5/32 x 4-1/2" | PCF344 | 500 |
| 3/16 x 3-1/4 | CF352 | 1.5M | 26 | 1/4" A.F. | 1-3/4" - 2-1/4" | 5/32 x 5-1/2" | PCF352 | 500 |
| 3/16 x 3-3/4 | CF360 | 1M | 20 | 1/4" A.F. | 2-1/4" - 2-3/4" | 5/32 x 5-1/2" | PCF360 | 500 |
| 3/16 x 4 | CF364 | 1M | 22 | 1/4" A.F. | 2-1/2" - 3" | 5/32 x 5-1/2" | PCF364 | 500 |
| 1/4 x 1-1/4 | CF420 | 3M | 37 | 5/16" A.F. | 0 - 1/4" | 3/16 x 3-1/2" | PCF420 | 500 |
| 1/4 x 1-3/4 | CF428 | 2M | 33 | 5/16" A.F. | 1/4" - 3/4" | 3/16 x 3-1/2" | PCF428 | 500 |
| 1/4 x 2-1/4 | CF436 | 1.5M | 31 | 5/16" A.F. | 3/4" - 1-1/4" | 3/16 x 4-1/2" | PCF436 | 500 |
| 1/4 x 2-3/4 | CF444 | 1M | 25 | 5/16" A.F. | 1-1/4" - 1-3/4" | 3/16 x 4-1/2" | PCF444 | 500 |
| 1/4 x 3-1/4 | CF452 | 1M | 28 | 5/16" A.F. | 1-3/4" - 2-1/4" | 3/16 x 5-1/2" | PCF452 | 500 |
| 1/4 x 3-3/4 | CF460 | .5M | 17 | 5/16" A.F. | 2-1/4" - 2-3/4" | 3/16 x 5-1/2" | PCF460 | 500 |
| 1/4 x 4 | CF464 | .5M | 18 | 5/16" A.F. | 2-1/2" - 3" | 3/16 x 5-1/2" | PCF464 | 500 |
| 1/4 x 5 | NEW! CF480 | .5M | 22 | 5/16" A.F. | 3-1/4" - 4" | 3/16 x 6-1/2" | N/A | N/A |
| 1/4 x 6 | NEW! CF496 | .5M | 26 | 5/16" A.F. | 4-1/4" - 5" | 3/16 x 7-1/2" | N/A | N/A |

**5 boxes packaged 100 per box. One drill bit included per box.

Carbide Masonry Drill Bit



| Size | Part No | Qty |
|--------------|-------------------|-----|
| 5/32 x 3-1/2 | MB531 | 25 |
| 5/32 x 4-1/2 | MB541 | 25 |
| 5/32 x 5-1/2 | MB551 | 25 |
| 3/16 x 3-1/2 | MB331 | 25 |
| 3/16 x 4-1/2 | MB341 | 25 |
| 3/16 x 5-1/2 | NEW! MB351 | 25 |
| 3/16 x 6-1/2 | NEW! MB361 | 25 |

