



**SOCKET PRODUCTS**

SOCKET CAP SCREWS	
011/581□	Alloy Thermal Black Oxide
872*□	Alloy Zinc Bake CR+3
837□	Alloy Mechanical Zinc
015□	Alloy Nylon Patch Thermal Black Oxide
307□	Alloy 1936 Series Thermal Black Oxide
532□	Alloy Class 12.9 DIN 912 / ISO 4762 Thermal Black Oxide
876*□	Alloy Class 12.9 DIN 912 / ISO 4762 Zinc Bake CR+3
012/592□	18-8 Stainless Steel ASTM F837 (CW)
014□	316 Stainless Steel ASTM F837 (CW)
538□	A2-70 (18-8) Stainless Steel DIN 912 / ISO 4762
549□	A4-70 (316) Stainless Steel DIN 912 / ISO 4762
066□	Class 12.9 ISO 4762 / DIN 912 Mechanical Zinc
854□	Class 8.8 Coarse Alloy DIN 912 / ISO 4762 Thermal Black Oxide
718*□	Class 8.8 DIN 912 / ISO 4762 Coarse Zinc Clear CR+3

FLAT SOCKET CAPS	
211/721□	Alloy Thermal Black Oxide
875*□	Alloy Zinc Bake CR+3
840□	Alloy Mechanical Zinc
215□	Alloy Nylon Patch Thermal Black Oxide
534□	Alloy Class 12.9 DIN 7991 / ISO 10642 Thermal Black Oxide
878*□	Alloy Class 12.9 DIN 7991 / ISO 10642 Zinc Bake CR+3
564□	Alloy Class 10.9 Coarse DIN 7991 / ISO 10642 Thermal Black Oxide
888*□	Alloy Class 10.9 Coarse DIN 7991 / ISO 10642 Zinc Bake CR+3
212/712□	18-8 Stainless Steel ASTM F879 Cond CW
063□	316 Stainless Steel ASTM F879 Cond CW
823□	A2-70 (18-8) Stainless Steel DIN 7991 / ISO 10642
862□	A4-70 (316) Stainless Steel DIN 7991 / ISO 10642
068□	Class 12.9 DIN 7991 Mechanical Zinc

BUTTON SOCKET CAPS	
201/701□	Alloy Thermal Black Oxide
874*□	Alloy Zinc Bake CR+3
839□	Alloy Mechanical Zinc
205□	Alloy Nylon Patch Thermal Black Oxide
535□	Alloy Class 12.9 ISO 7380 Thermal Black Oxide
565□	Class 10.9 Coarse ISO 7380 Thermal Black Oxide
889*□	Class 10.9 Coarse ISO 7380 Zinc CR+3
879*□	Alloy Class 12.9 Zinc Bake CR+3
065	Alloy Class 12.9 ISO 7380 Mechanical Zinc
202/702□	18-8 Stainless Steel ASTM F879 (CW)
062□	316 Stainless Steel ASTM F879 Cond CW
824□	A2-70 Stainless Steel ISO 7380

BUTTON SOCKET CAPS	
861□	A4-70 Stainless Steel ISO 7380
R87□	Flange A2-70 Stainless Steel ISO 7380-2
765□	Flange Class 10.9 ISO 7380-2 Thermal Black Oxide

SOCKET SHOULDER SCREWS	
221/711□	Alloy Thermal Black Oxide
225□	Alloy Nylon Patch Thermal Black Oxide
710□	18-8 Stainless Steel ASTM F837 (CW)
R88□	A2-70 Stainless Steel ISO 7379
537□	Alloy Class 12.9 ISO 7379 Thermal Black Oxide

LOW HEAD SOCKET CAP SCREWS	
019□	Alloy ASTM F835 Thermal Black Oxide
531□	Alloy Class 10.9 DIN 7984 Thermal Black Oxide
544□	A2-70 Stainless Steel DIN 7984
213□	Class 8.8 DIN 7984 Thermal Black Oxide
V63□	18-8 Stainless
V36□	316 Stainless

PIPE PLUGS	
231□	Alloy Plain Hex Dry Seal 3/4 Taper
233□	Alloy Plain Hex Flush Seal 7/8 Taper
230□	Brass Dry Seal 3/4 Taper
232□	18-8 Stainless Steel Dry Seal 3/4 Taper

CUP POINT SET SCREWS	
101/601□	Alloy Thermal Black Oxide
873*□	Alloy Zinc Bake CR+3
838□	Alloy Mechanical Zinc
105□	Alloy Nylon Patch Thermal Black Oxide
111□	Alloy Knurled Cup Pt. Thermal Black Oxide
816□	Alloy Locking Socket Jam Screw Plain
533□	Class 45H DIN 916 / ISO 4029 Plain
877*□	Class 45H DIN 916 / ISO 4029 Zinc Bake CR+3
067	Class 45H DIN 916 / ISO 4029 Mechanical Zinc
821□	Alloy Knurled Cup Pt. Class 45H Thermal Black Oxide
V65*□	Alloy Knurled Cup Pt. Zinc Bake CR+3
102/602□	18-8 Stainless Steel
104□	316 Stainless Steel
539□	A2 Class 21H DIN 916 / ISO 4029
541□	A4 Class 21H DIN 916 / ISO 4029

ASSORTED POINT SET SCREWS	
121/604□	Alloy Cone Pt. Thermal Black Oxide
125□	Alloy Cone Pt. Nylon Patch Thermal Black Oxide
831□	Alloy Cone Pt. Class 45H Plain DIN 914
704□	Cone Pt. 18-8 Stainless Steel
131/605□	Alloy Oval Pt. Thermal Black Oxide
705□	Oval Pt. 18-8 Stainless Steel
141/606□	Alloy Half Dog Pt. Thermal Black Oxide
706□	Half Dog 18-8 Stainless Steel
607□	Alloy Full Dog Pt. Thermal Black Oxide
833□	Alloy Full Dog Class 45H DIN 915 Plain

ASSORTED POINT SET SCREWS	
151/603□	Alloy Flat Pt. Thermal Black Oxide
155□	Alloy Flat Pt. Nylon Patch Thermal Black Oxide
832□	Alloy Flat Pt. Class 45H DIN 913 Thermal Black Oxide
703□	Flat Pt. 18-8 Stainless Steel
R89□	Flat Pt. A2 Class 21H DIN 913 / ISO 4026
855*□	Slotted Set Screws Case Hardened Zinc CR+3

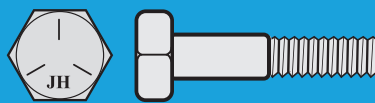
SQUARE HEAD SET SCREWS	
409/411□	Case Hardened Cup Point Plain
412□	Case Hardened Cup Point Fine Thread Plain
410□	Case Hardened Half Dog Point Plain
413□	Case Hardened Flat Point Plain
414□	Case Hardened Cone Point Plain
415□	Case Hardened Oval Point Plain
805□	Alloy Cup Point Plain
408□	18-8 Stainless Steel Cup Point

DOWEL PINS	
241□	Alloy Plain
261□	Alloy Pull Out Plain
251□	Alloy .001 Oversize Plain
536□	Alloy Plain DIN 6325
548□	Alloy Pull Out Plain DIN 7979
242□	18-8 Stainless Steel
245□	316 Stainless Steel
243□	416 Stainless Steel
550□	A2 Stainless Steel DIN7 (Oversize)
551□	A4 Stainless Steel DIN7 (Oversize)

SHORT ARM HEX KEYS	
511□	6150 CRV Alloy Plain (Import)
513□	6150 CRV Alloy Plain Import ISO 2936
509□	8650 NiCrMo Alloy Plain USA
530□	8650 NiCrMo Alloy Plain USA

LONG ARM HEX KEYS	
512□	6150 CRV Alloy Plain (Import)
519□	8650 NiCrMo Alloy Plain USA
528□	8650 NiCrMo Alloy Plain USA
514□	6150 CRV Alloy Plain (Import)

HEX KEY SETS	
529□	8650 Alloy (Inch/Metric) Sets (USA) Plain



**BOLT PRODUCTS**

GRADE 2	
402□	Grade 2 Cap Screws Plain
403*□	Grade 2 Cap Screws Zinc

GRADE 5 & 8.8	
846□	Grade 5 Cap Screws Plain
847*□	Grade 5 Cap Screws Zinc
086□	Grade 5 Cap Screws Plain (China)
087*□	Grade 5 Cap Screws Zinc (China)
458□	Grade 5 Cap Screws Zinc/Yel (Import)
456□	Grade 5 Cap Screws Plain (USA)
457*□	Grade 5 Cap Screws Zinc (USA)
643□	Class 8.8 DIN 933/961 ISO 4017 Plain

GRADE 5 & 8.8	
644□	Class 8.8 DIN 931/960 ISO 4014 Plain
815*□	Class 8.8 DIN 931/933/960/961 ISO 4014/4017 Zinc CR+3
467□	Class 8.8 DIN 931/933 ISO 4014/4017 Zinc/Yel CR+6

GRADE 8 & 10.9	
451□	Grade 8 Cap Screws Plain (Import)
455□	Grade 8 Cap Screws Zinc/Yel (Import)
042	Grade 8 Cap Screws Coarse Zinc/Yel Bake (China)
452□	Grade 8 Cap Screws Plain (USA)
454*□	Grade 8 Cap Screws Zinc/Yel (USA)
433	Grade 8 Heavy Hex Bolt Plain (USA)
462□	Class 10.9 DIN 933/961 ISO 4017 Plain
461□	Class 10.9 DIN 931/960 ISO 4014 Plain
460*□	Class 10.9 DIN 931/933/960/961 ISO 4014/4017 Zinc CR+3 Bake
164◇	Class 10.9 DIN 931/933/960/961 ISO 4014/4017 Plain
165□	Class 10.9 DIN 931/933/960/961 ISO 4014/4017 Zinc/Yel CR+6

STAINLESS HEX CAP	
400□	18-8 Hex Cap Screws
864□	18-8 Hex Cap Screws Full Thread
401□	316 Hex Cap Screws
399□	316 Hex Cap Screws Full Thread
830□	A2-70 Hex Cap Screws DIN 931/933 ISO 4014/4017
797□	A4-70 Hex Cap Screws DIN 931/ DIN 933 ISO 4014/4017
798□	A4-70 Hex Cap Screws Full Thread DIN 933 / ISO 4017

L9° FASTENING SYSTEM	
440*□	High Head Hex Cap Screw Zinc/Yel (USA)
444□	Hex Nuts Cad. Yellow & Wax (USA)
446□	L9 Collar Locknuts Cad. Yellow & Wax (USA)
447□	USS Tension Flat Washers Zinc/Yel (USA)
448□	SAE Tension Flat Washers Zinc/Yel (USA)

HEX BOLTS	
493□	A307 Grade A Plain
494*□	A307 Grade A Zinc
495□	A307 Grade A HDG
166	A354 Grade BD Plain (USA)
VB1◇	Brass Hex Head Tap Bolts
VS1◇	Silicon Bronze (651) Hex Cap Screws Full Thread
VB7◇	Brass Hex Cap Screws DIN 933

HEAVY HEX BOLTS	
505□	A193 Grade B7 Plain
484	A307 Grade B Plain
167*	A307 Grade B Zinc
168	A307 Grade B HDG
433	A354 Grade BD Plain (USA)

CARRIAGE BOLTS	
488□	A307 Grade A Plain
489*□	A307 Grade A Zinc
490□	A307 Grade A HDG
428□	A307 Grade A Zinc/Yel
491□	Grade 5 Plain
492*□	Grade 5 Zinc

CARRIAGE BOLTS	
192	Grade 5 Zinc/Yel
193	Grade 5 HDG
781◻	18-8 Stainless Steel
W69◻	316 Stainless Steel
707◻	A4-70 Stainless Steel DIN 603
622*◻	Class 4.6 DIN 603 Zinc CR+3
P73*◻	Class 8.8 DIN 603 Coarse Zinc CR+3

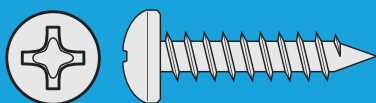
FLANGE BOLTS	
406*◻	Hex Flange Screws Serrated Grade 5 Zinc
W29◻	18-8 Hex Head Serrated Flange Screw with Wax (Inch)
437	Frame Bolts Indented Hex Flange Grade 8 Phos
F07◊	Frame Bolts Indented Hex Flange Grade 8 Zinc/Yel CR+6
P81◻	Hex Non-Serrated Flange Bolt 8.8 DIN 6921 Plain
P71*◻	Hex Non-Serrated Flange Bolt 8.8 DIN 6921 Zinc CR+3
P82◻	Hex Non-Serrated Flange Bolt 8.8 DIN 6921 Zinc/Yel CR+6
P72*◻	Hex Serrated Flange Bolt 8.8 DIN 6921 Zinc CR+3
P83◻	Hex Serrated Flange Bolt 8.8 DIN 6921 Zinc/Yel CR+6
P84◻	Hex Non-Serrated Flange Bolt 10.9 DIN 6921 Plain
033*◻	Hex Non-Serrated Flange Bolt 10.9 DIN 6921 Zinc CR+3
633◻	Hex Non-Serrated Flange Bolt 10.9 DIN 6921 Zinc Yellow CR+6

ASSORTED BOLTS	
404	Elevator Bolts Grade 1 Plain
405*◻	Elevator Bolts Grade 1 Zinc
473	Step Bolts Full Threaded Plain
474*◻	Step Bolts Full Threaded Zinc
506◻	Plow Bolts Grade 5 #3 Head Plain
507*◻	Plow Bolts Grade 5 #3 Head Zinc
P07*◻	Plow Bolts Grade 5 #3 Head Zinc
434	Plow Bolts Clipped Head Grade 5 Plain
422*◻	Grade 5 Clip Head Plow Bolt Zinc
429*◻	Plow Bolts Elliptical Head Grade 5 Zinc
V42	Plow Bolts Dome Head #3 Grade 8 Plain
747◻	Square Head Bolts A307 Grade A Plain
730*	Square Head Bolts A307 Grade A Zinc
733◻	Square Head Bolts A307 Grade A HDG
483	Timber Bolts A307 Grade A HDG
655◻	Hanger Bolts Plain
654*◻	Hanger Bolts Zinc
170*◻	Turned Eye Bolt No Nut Zinc

TAP BOLTS	
499◻	A307 Grade A Plain
500*◻	A307 Grade A Zinc
520◻	A307 Grade A HDG
501◻	Grade 5 Plain
502*◻	Grade 5 Zinc
902*◻	Grade 5 Zinc (USA)

HEX LAG SCREWS	
485◻	Plain
486*◻	Zinc
487◻	HDG
782◻	18-8 Stainless Steel
W70◻	316 Stainless Steel

HEX LAG SCREWS	
708◻	A4 Stainless Steel DIN 571
STRUCTURAL BOLTS	
508	A325 TC Bolt Assembly Plain (Import)
438	A325 TC Bolt Assembly Plain (USA)
R38	A325 TC Bolt Assembly Mechanical Galv. (USA)
497	A325 Type 1 HDG (Import)
480	A325 Type 1 HDG (USA)
496◻	A325 Type 1 Plain (Import)
503	A325 Type 1 Plain (USA)
479	A490 TC Bolt Assembly Plain (Import)
441	A490 TC Bolt Assembly Plain (USA)
498	A490 Type 1 Plain (Import)
504	A490 Type 1 Plain (USA)



**SCREW PRODUCTS**

STAINLESS MACHINE SCREWS	
771◻	18-8 Phillips Flat Head
772◻	18-8 Phillips Oval Head
773◻	18-8 Phillips Pan Head
774◻	18-8 Phillips Truss Head
674◻	A2 Metric Phillips Flat Head DIN 965
676◻	A2 Metric Phillips Pan Head DIN 7985
681◻	A4 Metric Phillips Pan Head DIN 7985
726◻	18-8 Flat Slotted Head
727◻	18-8 Pan Slotted Head
728◻	18-8 Round Slotted Head
W50◻	18-8 6-Lobe Flat Head
W51◻	18-8 6-Lobe Pan Head
W52◻	18-8 Square Drive Pan Head
W53◻	18-8 Trimmed Hex Head
W54◻	18-8 Phillips Fillister Head
W55◻	316 Phillips Pan Head
W56◻	316 Trimmed Hex Head
W57◻	316 Phillips Flat Head
W58◻	316 Phillips Truss Head
W59◻	316 Phillips Oval Head
W96◻	18-8 6-Lobe Truss Head
V08◻	18-8 6-Lobe Pin-In Flat Head
V09◻	18-8 6-Lobe Pin-In Button Head
V60◻	18-8 Slotted Indented Hex Washer Head
W97◻	18-8 Square Drive Flat Head
W12◻	18-8 Regular Thumb Screws Type B without Shoulder
W98◻	18-8 Phillips Pan Head SEMS
W99◻	A2 Phillips Pan Head SEMS DIN 7985
V95◻	A2 Slotted Pan Head DIN 85
516◻	A2 (18-8) Metric Slotted Flat Head DIN 963
093◻	A2 (18-8) Metric Slotted Cheese Head DIN 84
V38◻	Stainless A2 Machine Screw 6-Lobe Pan Head ISO 14583

MACHINE SCREWS	
577*◻	Combo (Phil/Slot) Round Zinc
578*◻	Combo (Phil/Slot) Truss Zinc
575*◻	Indented Hex Head Zinc
652*	Indented Hex Washer Head Slotted Zinc

MACHINE SCREWS	
576*◻	Indented Hex Washer Head Zinc
596*◻	Mushroom Head Combo (Slot/Phil) Zinc
586*◻	Phillips Flat Zinc
590*◻	Phillips Oval Zinc
587*◻	Phillips Pan Zinc
588*◻	Phillips Round Zinc
589*◻	Phillips Truss Zinc
661*◻	SEMS Phillips Pan External Tooth L/W 4.8 ASME B18.13.1M Zinc CR+3
661*◻	SEMS Phillips Pan Internal Tooth L/W 4.8 ASME B18.13.1M Zinc CR+3
661*◻	SEMS Phillips Pan Square Cone L/W 4.8 ASME B18.13.1M Zinc CR+3
593*◻	Sems Phillips Pan Zinc
579*◻	Slotted Binding Undercut Head
582*◻	Slotted Fillister Zinc
478◻	Slotted Flat Countersunk Screw Plain
580*◻	Slotted Flat Zinc
585*◻	Slotted Oval Zinc
591*◻	Slotted Pan Zinc
583*◻	Slotted Round Zinc
584*◻	Slotted Truss Zinc
594*◻	Thumb Screw Type A with Shoulder Zinc
595*◻	Thumb Screw Type B No Shoulder Zinc
663*◻	Class 4.8 Phillips Flat DIN 965A Zinc
085*◻	Class 4.8 Slotted Pan Head DIN 85 Zinc
662*◻	Class 4.8 Phillips Pan DIN 7985A Zinc
656*◻	Slotted Flat 4.8 DIN 963 Zinc CR+3
658*◻	Stove Bolt with M/S Nut Zinc
V32*◻	Class 4.8 6-Lobe Pan Head ISO 14583 Zinc
116◊	Brass Slotted Flat/Round/Oval/Fillister/Binder Undercut
116◊◻	Brass Phillips Flat/Round/Pan

WOOD SCREWS	
114◊◻	Brass Slotted Flat/Round/Oval
114◊◻	Brass Phillips Flat/Round
898*◻	Wood Screw Zinc

STAINLESS SELF TAPPING SCREWS	
790◻	18-8 Phillips Flat Head Type A
791◻	18-8 Phillips Oval Head Type A
792◻	18-8 Phillips Pan Head Type A
793◻	18-8 Phillips Truss Head Type A
182◻	18-8 Type AB (Inch)
673◻	18-8 Indent Hex Washer Head Type A
W60◻	18-8 Square Drive Pan Head Type A
W61◻	18-8 Square Drive Truss Head Type A
W62◻	18-8 Square Drive Flat Head Type A
W63◻	316 Slotted Hex Washer Head Type A
W64◻	316 Phillips Oval Head Type A
W65◻	316 Phillips Truss Head Type A
W66◻	316 Phillips Flat Head Type A
W67◻	316 Phillips Pan Head Type A

SELF TAPPING SCREWS	
696*◻	Type A Zinc
196	Type A Plain
697*◻	Type AB Zinc
698*	Type B Zinc
694*	Thread Rolling Screws Zinc/Wax
695*	Type T (23) Thread Cutting Screws Zinc
700*	Type BT (25) Thread Cutting Screws Zinc

SELF TAPPING SCREWS	
688	Type F Floorboard Thread Cutting Screws Phos
699*◻	Type F Thread Cutting Screws Zinc
709*◻	Type U Drive Screws Round Head Zinc
670*	Thread Rolling Screws Zinc
713*◻	Type F Thread Cutting Screws Pan Slotted

SELF DRILLING SCREWS	
637◻	Proferred® SDS Bugle Phillips Gray Phos
636*◻	Proferred® SDS Flat Phil Reamer w/ Wings Zinc
636*◻	Proferred® SDS HWH No Slot Zinc
638*	Proferred® SDS HWH w/ Bonded Sealing Washer, Zinc
636*◻	Proferred® SDS K-Lath/Mod Truss Phil Zinc
R51◻	Proferred® SDS Pan Framing PHOS
636*◻	Proferred® SDS Pan Phil Framing Zinc
636*◻	Proferred® SDS Phil Pan Zinc
636*◻	Proferred® SDS Trim Head Square Drive Zinc
636*◻	Proferred® SDS Wafer Phil w/Wings Zinc
636*◻	Proferred® SDS Wafer Phil Zinc
P50◻	Proferred® SDS Phil Bugle Gray Phos (LB)
P49*◻	Proferred® SDS Zinc (LB)
669*◻	SDS HWH Unslotted w/ Bonded Washer Zinc
R50	Self Drilling Screws Maxiseal Washer Climaseal (USA)
R57	Self Drilling Screws Teks® Light Duty Zinc Bake(USA)
R55	Self Drilling Screws Teks® Scots Head Climaseal (USA)
R56	Self Drilling Screws Teks® w/Bonded Washer Climaseal (USA)
693*◻	Self Drilling Screws Zinc
620*	Teks® SDS Zinc Climaseal (USA)
610*◻	Teks2® SDS Zinc (USA)
R58	Trugrip GT HWH Metal to Wood Climaseal (USA)
040◻	Self Drilling Screws Hardened Stainless Steel 410
R03◻	Self Drilling Screws Stainless Steel 410 Indent HWH Unslot with Bonded Washer (Inch)

CONSTRUCTION SCREWS	
634◻	Proferred® Drywall Screws Bugle Phillips Coarse Thread Gray Phos
635◻	Proferred® Drywall Screws Bugle Phillips Coarse Thread Zinc/Yel
634◻	Proferred® Drywall Screws Bugle Phillips Fine Thread Gray Phos
634◻	Proferred® Drywall Screws Phil Bugle High-Low Thread Phos
634◻	Proferred® Drywall Screws Pan Phil Framing Gray Phos
634◻	Proferred® Phil Bugle Laminating Screw Gray Phos
926◻	Proferred® Phillips Drive Bits - Plain
665◻	Deck Screw Square Drive Phosphate Hardened
664◻	Deck Screw Square Drive Zinc/Yel Hardened
687	Deck Screw Phillips Dacrotized
691◻	Drywall Screws Phillips Bugle Phos



CONSTRUCTION SCREWS	
684*	Drywall Screws Phillips Bugle NC Zinc
690□	Drywall Screws Phillips Bugle Zinc/Yel
692*□	Drywall Screws Phillips K-Lath Twinfast Zinc
667	Particle Board Screws Flat Head Phillips Black Phos Hardened
666	Particle Board Screws Flat Head Square Drive Black Phos Hardened
P54□	Phillips Combo Drive® Deck Screws Green (ACQ Compatible)
P56□	Phillips Combo Drive® Deck Screws Red (ACQ Compatible)
P55□	Phillips Combo Drive® Deck Screws Tan (ACQ Compatible)
906□	Phillips Combo Drive® Phillips Drive Bits - Plain
689□	Self-Drilling Drywall Screws Phillips Bugle Self Drilling #2PT Phos
668*	Self-Drilling Drywall Screws Bugle Head Phillips Zinc
686*□	Self Piercing Screws Zinc
064□	Proferred® Drywall Screw Black Phos (Taiwan)
070□	Proferred® Drywall Screw Phillips Bugle Zinc/Yel (Inch) (Taiwan)
659*	Ph Fl Particle Board Screw ZB
W75*	Proferred® K-Lath Mod Truss Sharp Point Screw Zinc CR+3
717	Particle Board Screw Plain Hardened
V56□	Proferred® Max Drive Deck Screws
P51□	Proferred® Drywallers™ Drywall Screw Gray Phos (LB)
P61□	Phil SQ-Drive Composite Screw
V03□	Phillips Drive Bugle Head Deck Screw, Type 17, 18-8 Stainless Steel
V02□	Square Drive Bugle Head Deck Screw, Type 17, 18-8 Stainless Steel
V05□	Square Drive Bugle Head Deck Screw, Type 17, 316 Stainless Steel
V04□	18-8 Square Drive Flat Head Deck Screw, Type 17, 4 Nibs
V10	Proferred® Cement Board Screws, Sharp Point
V10	Proferred® Cement Board Screws, SDS



**NUT PRODUCTS**

FINISHED HEX NUTS	
317□	Finished Hex Nuts Plain
319*□	Finished Hex Nuts Zinc
321□	Finished Hex Nuts Zinc/Yel
323□	Finished Hex Nuts HDG
849□	Finished Hex Nuts Grade 5 Plain
597	Finished Hex Nuts Grade 5 Plain NC (USA)
848*□	Finished Hex Nuts Grade 5 Zinc
598*□	Finished Hex Nuts Grade 5 Zinc (USA)
760	Finished Hex Nuts Grade 5 Zinc/Yel
308□	Finished Hex Nuts Grade 8 Plain
599	Finished Hex Nuts Grade 8 Plain NC (USA)
328*□	Finished Hex Nuts Grade 8 Zinc Clear
306□	Finished Hex Nuts Grade 8 Zinc/Yel
600□	Finished Hex Nuts Grade 8 Zinc/Yel (USA)
572*□	Hex Nuts Class 6 DIN 934 Zinc
557□	Hex Nuts Class 8 DIN 934 Plain

FINISHED HEX NUTS	
556*□	Hex Nuts Class 8 DIN 934 Zinc
522	Hex Nuts Class 8 DIN 934 Zinc/Yel
300□	Hex Nuts Class 10 DIN 934 Plain
315*□	Hex Nuts Class 10 DIN 934 Zinc/Blue
270□	Hex Nuts Class 10 DIN 934 Zinc/Yel
117□	Brass Finished Hex Nuts
VB9□	Brass Hex Nuts DIN 934
VS5□	651 Silicon Bronze Hex Nuts

HEAVY HEX NUTS	
314□	A194 2H Heavy Hex Nuts Plain
072□	A194 2H Heavy Hex Nuts Plain (Taiwan)
294□	A194 2H Heavy Hex Nuts Plain (USA)
299*□	A194 2H Heavy Hex Nuts Zinc
313□	A194 2H Heavy Hex Nuts HDG / Wax
292□	A194 2H Heavy Hex Nuts HDG / Wax (USA)
R20□	A194M 2H Metric Heavy Hex Nut Coarse Plain
318□	A563-A Heavy Hex Nuts Plain
320*□	A563-A Heavy Hex Nuts Zinc
322□	A563-A Heavy Hex Nuts Zinc/Yel
324□	A563-A Heavy Hex Nuts HDG
334	A563 Grade C Heavy Hex Nuts Plain
176	A563 Grade C Heavy Hex Nut Plain (USA)
227*	A563 Grade C Heavy Hex Nuts Zinc
228	A563 Grade DH Heavy Hex Nuts Plain
174□	A563 DH Heavy Hex Nuts Plain (USA)
335	A563 Grade DH Heavy Hex Nuts HDG/Wax & Blue Dye
175	A563 DH Heavy Hex Nuts HDG / Wax (USA)
VB2□	Brass Heavy Hex Nuts

HEX JAM NUTS	
329□	Finished Hex Jam Nuts Plain
330*□	Finished Hex Jam Nuts Zinc
331□	Finished Hex Jam Nuts Zinc/Yel
327□	Finished Hex Jam Nuts HDG
289□	Heavy Hex Jam (Thin) Nuts Grade A Plain
290*□	Heavy Hex Jam (Thin) Nuts Grade A Zinc
P94□	Jam Nuts DIN 439B CI 04 Plain
526*□	Jam Nuts DIN 439B CI 04 Zinc
VB3□	Brass Hex Jam Nuts
VB6□	Brass Hex Jam Nuts DIN 439 Metric

MACHINE SCREW NUTS	
332□	Hex Machine Screw Nuts Plain
325*□	Hex Machine Screw Nuts Zinc
113□	Brass Machine Screw Nuts
298*□	Square Machine Screw Nuts Zinc

NYLON INSERT LOCKNUTS	
305*□	Grade N2 (A) Nylon Insert Locknut Zinc (NE/NTE/NU/NTU/NM/NTM)
759	Grade N2 (A) Nylon Insert Locknut, (NE & NTE), Zinc Yellow
897	Grade N8 (C) Nylon Insert Locknut Plain
828□	Grade N8 (C) Nylon Insert Locknut Phos. & Oil
845□	Grade N8 (C) Nylon Insert Locknut Zinc Yellow
812*□	Class 8 Nylon Insert Locknut DIN 982 / 985 Zinc

NYLON INSERT LOCKNUTS	
222	Class 8 Nylon Insert Locknut Zinc/Yel (Metric)
312*□	Class 10 Nylon Insert Locknut DIN 985 Zinc
V46*	Class 8 Nylon Flange Locknut Non-Serrated Metric Coarse Zinc CR+3
V47	Class 8 Nylon Flange Locknut Non-Serrated Metric Coarse Zinc/Yel
V48	Class 10 Nylon Flange Locknut Non-Serrated Metric Coarse Zinc/Yel

ALL METAL LOCKNUTS	
859*□	Reversible (2-Way) Gr. A Zinc
825*□	Grade C Zinc/Wax
738*□	Hex Cone Locknut Class 8 DIN 980-V Coarse Zinc/Wax
V53	Hex Cone Locknut Class 8 DIN 980-V Coarse Zinc/ Yel & Wax
826*□	Hex Cone Locknut Class 10 DIN 980-V Coarse Zinc CR+3 & Wax
V54	Hex Cone Locknut Class 10 DIN 980-V Coarse Zinc/Yel & Wax
095	Grade G Phos & Oil Hex Flange Cone Locknut (Two Opposite Oval Lock Type)
523*	Class 8 Prevailing Torque Hex Flange Locknut DIN 6927 Zinc CR+3
P90□	Class 10 Hex Non-Serrated Flange Metal Top Locknut DIN 6927 plain
P92*□	Class 10 Hex Non-Serrated Flange Metal Top Locknut DIN 6927 Zinc CR+3
858*□	External Tooth K-Lock Zinc
525*□	Class 8 External Tooth K-Lock Coarse Zinc CR+3

STAINLESS HEX NUTS	
762□	18-8 Hex Nuts
763□	316 Hex Nuts
764□	18-8 Hex Machine Screw Nuts
W76□	316 Hex Machine Screw Nuts
766□	18-8 Hex Jam Nut
V70□	316 Hex Jam Nuts
769□	18-8 Heavy Hex Nuts
746□	316 Heavy Hex Nuts
W71□	ASTM A194 Grade 8 (304 SS) Heavy Hex Nut (Inch)
W72□	ASTM A194 Grade 8M (316 SS) Heavy Hex Nut (Inch)
834□	A2-70 Hex Nuts DIN 934
560□	A4-70 Hex Nuts DIN 934
559□	A4-80 Hex Nuts DIN 934
V71□	A2-035 Hex Thin (Jam) Nuts DIN 439B
562□	A4-035 Hex Thin (Jam) Nuts DIN 439B

STAINLESS LOCKNUTS	
310□	18-8 Hex Nylon Insert Nuts
311□	316 Hex Nylon Insert Nuts
561□	A2-70 Hex Nylon Insert Locknuts DIN 985
524□	A4 Hex Nylon Insert Locknuts DIN 985
045□	Hex Flange Nuts Serrated 18-8 Stainless Steel
046□	Hex Flange Nuts Serrated 316 Stainless Steel
V49□	Metric Stainless A2 Nylon Flange Locknut, Non-Serrated DIN 6926
767□	18-8 External Tooth K-Lock Nut
V50□	A2-70 External Tooth K-Lock Nuts

FLANGE NUTS	
857*□	Serrated Flange Nut Zinc CR+3 ASME B18.16.4

FLANGE NUTS	
P86□	Class 8 Hex Non-Serrated Flange Nut Zinc Plain
047□	Class 8 Hex Serrated Flange Nut Plain
546*□	Class 8 Hex Non-Serrated Flange Nut Zinc CR+3
547*□	Class 8 Hex Serrated Flange Nut Zinc CR+3
P85□	Class 8 Hex Serrated Flange Nut Zinc Yellow CR+6
P88□	Class 10 Hex Non-Serrated Flange Nut Plain
P91*□	Class 10 Hex Non-Serrated Flange Nut Zinc CR+3
P89□	Class 10 Hex Non-Serrated Flange Nut Zinc Yellow CR+6
R09□	A2 Hex Flange Nuts Non Serrated DIN 6923
V87□	Stainless A2-70 Serrated Flange Locknut DIN 6923 Coarse
V88□	A4-80 Hex Flange Nuts Serrated DIN 6923

ASSORTED NUTS	
301□	Acorn Nut 2-Piece Nickel Plate
569□	Acorn Nut 1 Piece 304 Stainless
417*□	Acorn Nut Domed Class 6 DIN 1587
VB4□	Brass Acorn Cap Nuts
570□	Acorn Nut 1 Piece A2 Stainless DIN 1587
566□	Acorn Nut 1 Piece A4 Stainless DIN 1587
224	Castle Nuts Plain
286□	Slotted Finish Hex Nuts Grade 2 Coarse & Fine Plain
287*□	Slotted Finish Hex Nuts Grade 2 Coarse & Fine Zinc
288	Heavy Slotted Hex Nuts Coarse Plain
895□	Hex Coupling Nut A563-A Plain
303*□	Hex Coupling Nut A563-A Zinc
896□	Hex Coupling Nuts A563-A HDG
048□	Hex Coupling Nuts 18-8 Stainless Steel
048□	Hex Reducing Coupling Nuts 18-8 Stainless Steel
056□	Hex Coupling Nuts 316 Stainless Steel
621*	Hex Coupling Nut Class 6 DIN 6334 Zinc
043□	Hex Coupling Nuts A2-70 Stainless DIN 6334
568□	Hex Coupling Nuts A4-70 Stainless DIN 6334
236□	Square Nuts Grade 2 Plain
237*□	Square Nuts Grade 2 Zinc
238□	Square Nuts Grade 2 HDG
863*□	Wing Nuts Stamped and Cold Formed ZIN CR+3
768□	Wing Nuts Cold Formed 18-8 Stainless Steel
V01□	Wing Nuts Cold Formed 316 Stainless Steel
P93*□	Wing Nuts Cold Formed DIN315 Coarse Zinc CR+3
V79□	Metric Wing Nuts A2 Stainless Steel
567□	Metric Wing Nuts A4 Stainless Steel
VB5□	Brass Wing Nuts
302*□	Tee Nuts 3 and 4 Prong Zinc
V06□	Tee Nuts, 18-8 Stainless Steel
285*	Panel Nuts Zinc
596	High Nut Grade 8 Fine Thread Plain
284*	Wheel Nuts Right Hand 60 Degree Taper Zinc

COTTER PINS	
260*□	Cotter Pins Extended Prong Square Cut Zinc



**WASHER PRODUCTS**

**FLAT WASHERS (LOW CARBON)**

346□	SAE Plain (50 lb Carton)
P45□	SAE Plain (Pieces)
347*□	SAE Zinc (50 lb Carton)
P46*□	SAE Zinc (Pieces)
256	SAE Zinc/Yel (50 lb Carton)
385□	SAE HDG (50 lb Carton)
343□	USS Plain (50 lb Carton)
P42□	USS Plain (Pieces)
344*□	USS Zinc (50 lb Carton)
P43*□	USS Zinc Clear (Pieces)
255	USS Zinc/Yel (50 lb Carton)
345□	USS HDG (50 lb Carton)
P44□	USS HDG (Pieces)
388	Fender Washers Plain (50 lb Carton)
360*□	Fender Washers Zinc (50 lb Carton)
P36*□	Fender Washers Zinc CR+3 (Pieces)
368□	DIN 125A 140HV Plain (Pieces)
370*□	DIN 125A 140HV Zinc CR+3 (Pieces)
250	DIN 125A 140HV Zinc/Yel (Pieces)
248	DIN 125A 200HV Plain
249*	DIN 125A 200HV Zinc
246□	DIN 125A 200HV Zinc/Yel
739*□	DIN 433 Small Washer Zinc
247*	DIN 7349 Thick Flat Washer Zinc
740*□	DIN 9021B Fender Washers Zinc
719*	DIN 9021B Grade C Fender Washer Zinc
021	Round Plate Washer Plain
022	Round Plate Washer HDG

**FLAT WASHERS (THRU HARDENED)**

384□	SAE Thru Hardened Plain (Import)
382□	SAE Thru Hardened Plain (USA)
852*□	SAE Thru Hardened Zinc (USA)
383□	SAE Thru Hardened Zinc/Yel (Import)
381□	SAE Thru Hardened Zinc/Yel (USA)
389□	SAE Extra Heavy Zinc/Yel (USA)
354□	USS Med. Carbon Thru Hardened Plain (Import)
352□	USS Thru Hardened Plain (USA)
850*□	USS Thru Hardened Zinc (USA)
353□	USS Thru Hardened Zinc/Yel (Import)
351□	USS Thru Hardened Zinc/Yel (USA)
371*□	ASME B18.22M (Narrow Series) Thru Hardened Metric Zinc CR+3
V44	DIN 125A Flat Washer 300 HV Plain
V45*	DIN 125A Flat Washer 300 HV Zinc CR+3

**FLAT WASHERS (STAINLESS)**

390□	18-8 BBI Standard
391□	18-8 Commercial Standard
398□	316 Stainless Steel Commercial Standard
392□	18-8 Fender Standard
369□	A2 Stainless Steel DIN 125A
V12□	A4 Stainless Steel DIN 125A
V43□	DIN 433 Small Flat Washer A2 Stainless
R07□	A2 Stainless DIN 7349 Thick Flat Washer
VW20□	316 Fender Standard

**FLAT WASHERS (STAINLESS)**

V77□	A2 Fender DIN 9021B
V78□	A4 Fender DIN 9021B
394□	18-8 Stainless Steel MS15795

**SPLIT LOCKWASHERS (HARDENED)**

348□	Regular Plain
358□	Regular Plain (USA)
349*□	Regular Zinc CR+3
340□	Alloy Zinc-Yellow CR+6
055□	Regular Zinc-Yellow CR+6
350□	Regular HDG
013□	High Collar Plain
028□	High Collar Zinc-Yellow CR+6
342□	Heavy Plain
744□	DIN 127B Plain
361*□	DIN 127B Zinc CR+3
745□	DIN 127B Zinc-Yellow CR+6
743	DIN 7980 High Collar Plain
R64*□	DIN 7980 High Collar Zinc CR+3

**STAINLESS SPLIT LOCKWASHERS**

754□	Regular 18-8 Stainless Steel
755□	Regular 316 Stainless Steel
836□	DIN 127B A2 Stainless Steel
365□	DIN 127B A4 Stainless Steel
R85□	DIN 7980 High Collar A2 Stainless Steel

**LOCKWASHERS**

239*□	External Tooth Zinc
240*□	Internal Tooth Zinc
024*□	Internal/External Tooth Lock Washers, Zinc
741*□	DIN 6797A External Tooth Zinc
742*□	DIN 6797J Internal Tooth Zinc
749*	DIN 6798A External Tooth Serrated Zinc
VS40□	Silicon Bronze (651) Split Lockwashers
VS30□	Phosphor Bronze Internal/External Tooth Lock Washers
V73□	DIN 6797 Type A External Tooth A2 Stainless Steel
V73□	DIN 6797 Type J Internal Tooth A2 Stainless Steel
V13□	DIN 6798 Type A External Tooth A2 Stainless Steel

**SQUARE WASHERS**

379	F436 Square Beveled Hardened Washers Plain
380	F436 Square Beveled Hardened Washers HDG
377	Square Beveled Malleable Washers Plain
023*	Square Bevel Malleable Washers Zinc
378	Square Beveled Malleable Washers HDG
296	Square Plate Washers Plain
297	Square Plate Washers HDG

**ASSORTED WASHERS**

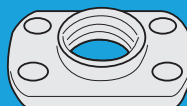
026*□	Bonded Sealing Washers Zinc
223□	Countersunk Finishing Washer 18-8 Stainless Steel
253□	Countersunk Finishing Washer Nickel Plated
VB00□	Brass Countersunk Finishing Washers
254	Ogee Washer Class 30 Grey Iron HDG
1120□	Brass Flat Washers
P39	Round Malleable Washers HDG

**ASSORTED WASHERS**

P38□	Round Malleable Washers Plain
R67	Shear Plate Washer Malleable Plain
R68	Shear Plate Washer Malleable HDG
R91□	DIN 137A Curved Spring Washer Plain
R93□	DIN 137B Wave Spring Washer Plain
VS20□	Silicon Bronze (651) Flat Washers
VB80□	Brass Flat Washers DIN 125 Metric

**STRUCTURAL WASHERS**

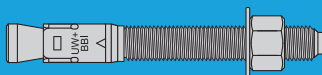
355□	F436 Plain (Import)
386□	F436 Plain (USA)
356□	F436 Zinc-Yellow (Import)
357	F436 HDG (Import)
257□	F436 HDG (USA)
374□	F436M Hardened Washer Plain
179	Direct Tension Indicator Washer MGAL (For A-325)(USA)(INCH)
180□	Direct Tension Indicator Washer Plain (For A-325)(USA)(INCH)
077	A325 DTI Squirter* Washer Mech Gal



**WELD PRODUCTS**

**WELD FASTENERS**

W82	Hex Weld Nut Long Pilot 3 Projections
W83	Hex Weld Nut Short Pilot 3 Projections
W84	Hex Weld Nut Long Pilot 6 Projections
W85	Hex Weld Nut Short Pilot 6 Projections
W86	Spot Weld Nut Single Tab W/Target
W87	Spot Weld Nut Single Tab
W88	Spot Weld Nut Double Tab
W89	Spot Weld Nut Dual Rib Projection
W90	Spot Weld Nut 4 Projections
W91	Spot Weld Nut Single Tab Single Projection
W92	Retainer Weld Nut
W93	Headed Weld Stud
W94□	Ferrule for Headed Weld Studs
V07□	Hex Weld Nut 3 Projections 18-8 Stainless Steel
416□	Weld Nut DIN 929 Plain
V20	Flanged Capacitor Discharge (CD) Stud, Mild Steel, Copper Plated
V21	Flanged Capacitor Discharge (CD) Stud, Stainless Steel
V22	Flanged Capacitor Discharge (CD) Stud, Aluminum



**ANCHOR PRODUCTS**

**ANCHORS**

157*□	UltraWedge™ + Wedge Anchor Zinc
158□	UltraWedge™ Wedge Anchor HDG
616□	UltraWedge™ Wedge Anchor 304 Stainless Steel
617□	UltraWedge™ Wedge Anchor 316 Stainless Steel
279*□	Commercial Wedge Anchor Zinc
660□	Tap-King™ SD Concrete Screw Blue/White/Bronze/Silver Durablecoat
044*□	Tap-King™ HD Concrete Screw Anchor Zinc CR+3 (ICC Crack Concrete Approved)

**ANCHORS**

685□	Commercial Concrete Screw w/Blue Durablecoat
268*□	Drop-In Anchor Zinc Knurled Body w/Setting Tool
269	Drop-In Anchor Setting Tool
619□	Drop-In Anchor 304 Stainless w/Setting Tool
276*□	Sleeve Anchor Acorn Nut Zinc
277*□	Sleeve Anchor Flat Head Zinc
278*□	Sleeve Anchor Hex Nut Zinc
618□	Sleeve Anchor Hex Nut 304 Stainless
426*□	Sleeve Anchor Round Head Zinc
R17□	Sleeve Anchor w/Rod Hanger Zinc
R37*□	Eye Coupling Nuts Zinc CR+3
273□	Lag Screw Expansion Shields Short Zinc Alloy
274□	Lag Screw Expansion Shields Long Zinc Alloy
263□	Double Expansion Shield Zinc Alloy
264□	Single Expansion Shield Zinc Alloy
275□	Machine Screw Anchor Zinc Alloy
R06□	Machine Screw Anchor Setting Tool
280□	Wood Screw Anchor Lead Alloy
R02□	Self-Drill Drywall USA EZ Anchor (Nylon and Zinc)
262*□	Toggle Wing Zinc
893*□	Toggle Bolt with Wing Zinc
143*□	Toggle Bolt "Acoustical" with Wing Zinc
265□	Hammer Drive Anchor Mushroom Head w/304 S/S Nail
266□	Hammer Drive Anchor Mushroom Head w/Zinc Plated Steel Nail
267□	Hollow Wall Anchor Pan Head Combo (Phil/Slit) Zinc
272□	Hollow Wall "Drive Type" Pan Head Combo (Phil/Slot) Zinc
R05□	Hollow Wall Anchor Setting Tool
R14□	Nylon Nail Drive Anchor
R15□	Drive Pin Expansion Anchor Zinc
159*□	Split Fast Drive Anchor (Flat Head) Zinc CR+3
R08□	Mungo™ - MB-S Nylon Framing Anchor
R10□	Mungo™ - MNA-S Countersunk Nylon Hammer Screw
156□	Mungo™ - Nylon Plug
078□	Plastic Conical Lip Anchor (Red, Blue)
K05□	Plastic Conical Lip Anchor Kits (Red & Blue) with screws & drill bit
431□	L Shaped Anchor Bolt with Nut & Washer Plain
432□	L Shaped Anchor Bolt with Nut & Washer HDG



**RIVETS**

184□	Preferred® Rivets Aluminum 5052 / Aluminum 5052 Dome Head
185□	Preferred® Rivets Aluminum 5056 / Steel Dome Head
183□	Preferred® Rivets Steel/Steel Dome Head
186□	Preferred® Rivets Stainless 304 / Stainless 304 Dome Head
VR1□	Blind Rivet (Inch)
034□	Preferred® Rivets Steel/Steel Large Flange Dome Head
035□	Preferred® Rivets Aluminum 5052 / Aluminum 5052 Large Flange Dome Head

RIVETS	
036□	Preferred® Rivets Aluminum 5056 / Steel Large Flange Dome Head
037□	Preferred® Rivets Stainless 304 / Stainless 304 Large Flange Dome Head
100*□	Preferred® Rivets Steel/Steel Countersunk Zinc
132□	Preferred® Rivets Aluminum/ Aluminum Countersunk
134□	Preferred® Rivets Aluminum 5056/ Steel Countersunk
136□	Preferred® Rivets Stainless 304/ Stainless 304 Countersunk
137□	Preferred® Rivets Stainless 304/ Steel Countersunk
W30□	Preferred® Rivets Aluminum/Steel Dome Closed-End
W31□	Preferred® Rivets Aluminum/Steel Countersunk Closed-End
W32□	Preferred® Rivets Aluminum/ Aluminum Dome Closed-End
W33□	Preferred® Rivets Stainless 304/ Stainless 420 Grooved Dome Closed-End
W34*□	Preferred® Rivets Steel/Steel Zinc Dome Head Multi-Grip Type
W35*□	Preferred® Rivets Aluminum/Steel Zinc Dome Head Multi-Grip Type
W36□	Preferred® Rivets Aluminum/Steel Zinc Large Flange Head Multi-Grip Type
VR2◇	Alum / Alum Dome Head Cup-Lock Rivet (Inch)
VR3◇	Stainless 304 / Stainless 304 Dome Head Cup-Lock Rivet (Inch)
VR4◇	Steel Zinc / Steel Zinc Dome Head Cup-Lock Rivet (Inch)
W37□	Preferred® Rivets Aluminum/Steel Zinc Countersunk Head Multi-Grip Type

RIVET NUTS	
W78□	Steel Large Flange Knurled Body Zinc Yellow CR+3 (Metric and Inch)
W80□	Steel Small Flange Knurled Body Zinc Yellow CR+3 (Metric and Inch)
W77□	Steel Small Flange Smooth Body Zinc CR+3 (Metric and Inch)
W79□	Aluminum Large Flange Knurled Body (Inch)
W81□	Aluminum Small Flange Knurled Body (Inch)
V28□	Steel Hex Rivet Nut (Metric) Zinc Yellow CR+3
V29□	Steel Hex Rivet Nut (Inch) Zinc Yellow CR+3
V30□	Al 5056 Hex Rivet Nut (Metric) Plain
V31□	Al 5056 Hex Rivet Nut (Inch) Plain

RIVET WASHERS	
142□	Backup Rivet Washers Aluminum
152*□	Backup Rivet Washers Steel Zinc



**ROD/STUD PRODUCTS**

STEEL THREADED ROD	
776	A307 Gr. A All Thread Rod Plain
777*	A307 Gr. A All Thread Rod Zinc CR+3 (UNC & UNF)
770	A307 Gr. A All Thread Rod HDG
W38	F1554 Gr. 36 All Thread Rod Plain
W39*	F1554 Gr. 36 All Thread Rod Zinc CR+3
F15◇	F1554 Gr. 55 S1 All Thread Rod Plain
F16◇	F1554 Gr. 55 S1 All Thread Rod HDG

STEEL THREADED ROD	
778	A193 Gr. B7 All Thread Rod Plain (UNC, UNF & UN)
V34	DIN 975 Cl. 4.6 All Thread Rod Plain
737*	DIN 975 Cl. 4.6 All Thread Rod Zinc CR+3
V37	DIN 975 A193 Gr. B7 All Thread Rod Plain

STAINLESS THREADED ROD	
886	304 All Thread Rod ASME B18.3.1.3
887	316 All Thread Rod ASME B18.3.1.3
871	A2 All Thread Rod DIN 975
869	A4 All Thread Rod DIN 975
890	304 ASTM A193 Gr. B8 Class 1 All Thread Rod
891	316 ASTM A193 Gr. B8M Class 1 All Thread Rod

STEEL ROD/BAR	
R18*	Low Carbon Steel Round Unthreaded Rod Zinc CR+3
R19*	Low Carbon Steel Square Keystock Zinc CR+3

STUDS	
775□	A193 Grade B7 Stud Plain

HOSE CLAMPS	
VH1◇	30-304 Stainless Band - 430 Stainless Zinc Plated Screw (Worm-Gear)
VH2◇	40-304 Stainless Band - 304 Stainless Screw (Worm-Gear)
VH3◇	50-316 Stainless Band - 316 Stainless Screw (Worm-Gear)
VH4◇	60-304 Stainless Band - Carbon Steel Nickel Plated Screw (Worm-Gear)



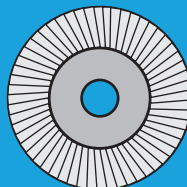
**DRILL BITS**

CONCRETE DRILL BITS	
C10□	SDS Plus Rotary Hammer Drill
C11□	Slow Spiral Masonry Drill
R62□	Concrete Bit - For Concrete Screw
C12□	SDS Plus + Stop Rotary Hammer Bit
C13□	SDS Max® Rotary Hammer Drill
C19□	SDS Hex Bit - For Concrete Screw
C99	Concrete Screw Installation Kit

METAL CUTTING DRILL BITS	
C20□	Preferred® Drill Bit Set
C21□	Preferred® M2 HSS Twist Drill Bit
C22□	Preferred® M35 Cobalt Twist Drill Bit
C23□	Preferred® M42 Super Cobalt Double End Drill Bit
C24□	Preferred® M42 Super Cobalt Spot-weld Drill Bit
C25□	M2 HSS Step Drill Bit (Inch)
C26□	Preferred® M2 HSS Black and Gold Drill Bit
C30□	M2 HSS Annular Cutter for Magnetic Drill Bit (Inch)
C31□	M2 HSS Annular Cutter Pilot Pin (Inch)
C32□	Tungsten Carbide Tipped Cutter (Inch)
C33□	Tungsten Carbide Tipped Accessories (Inch)
C34□	M2 HSS Reamer (Inch)
C35□	Screw Extractor Set
C36□	Screw Extractor
C40□	Tap and Drill Set
C42□	HSS Plug Tap
C43□	Carbon Pipe Tap

METAL CUTTING DRILL BITS	
C44□	HSS Pipe Tap
C45□	HSS Combo Drill Tap
C46□	HSS Spiral Point Gun Tap
C47□	Tap Wrench
C48□	HSS Taper Tap
C49□	HSS Bottom Tap

WOOD CUTTING DRILL BITS	
C50□	Spade Bit Set
C51□	Spade Bit
C52□	Self Feed Drill
C53□	Wood Drill Extension
C55□	Ship Auger



**ABRASIVES**

CUTTING DISC	
A01□	Cut-Off Wheels and Chop Saw Wheels, Treated Alum Oxide
A02□	Portable High Speed Gas Saw Wheels, Alum Oxide

GRINDING DISC	
A05□	Type 27

FLAP DISC	
A10□	Type 29
A12□	Type 27

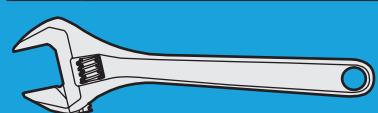
HAND PAD	
A20□	Hand Pad

WIRE BRUSH	
C38□	Carbon
C39□	Stainless Steel



**SAWS**

BI-METAL RECIPROCATING	
C60□	Bi-Metal Reciprocating Blades



**HAND TOOLS**

SOCKET SETS	
S04□	Preferred® 1/4" Drive Standard SAE
S05□	Preferred® 1/4" Drive Standard Metric
S06□	Preferred® 3/8" Drive Standard SAE
S07□	Preferred® 3/8" Drive Standard Metric
S08□	Preferred® 1/2" Drive Standard SAE
S09□	Preferred® 1/2" Drive Standard Metric
S11□	Preferred® 1/2" Drive Impact SAE
S12□	Preferred® 1/2" Drive Impact Metric
S01□	Preferred® 3/4" Socket Master Set
S39□	Tiny Bone 5 in 1 Ratchet Handle

INDIVIDUAL SOCKETS	
S15□	1/4" Drive SAE Socket
S16□	1/4" Drive Metric Socket
S19□	3/8" Drive SAE Socket
S20□	3/8" Drive Metric Socket
S23□	1/2" Drive SAE Socket
S24□	1/2" Drive Metric Socket
S30□	Impact 3/8" Drive SAE Socket
S31□	Impact 3/8" Drive Metric Socket
S32□	Impact 1/2" Drive SAE Socket
S33□	Impact 1/2" Drive Metric Socket
S34□	Impact 3/4" Drive SAE Socket
S35□	Impact 3/4" Drive Metric Socket

SOCKET ACCESSORIES	
S40□	Pear Ratchet Handle (No Mark)
S41□	Flex Handle (Breaker Bar)
S42□	Cobra Flex Handle (Breaker Bar)
S43□	Drive Extension Bar
S44□	Drive Impact Extension Bar
S45□	Universal Joint
S46□	Impact Universal Joint
S47□	Adapter
S49□	Magnetic Aluminum Socket Rail

SNIPS	
T02□	Preferred® Aviation Snips TPR Grip

ADJUSTABLE WRENCHES	
T05□	Preferred® Standard Phos. Finish
T06□	Preferred® Tiger Paw with Padded Handle Matte Finish
T07□	Preferred® Quick Snap Matte Finish
T08□	Preferred® Plumbing Phos. Finish
T09□	Preferred® Ratcheting Matte Finish
T10□	Preferred® Mining with Hammer Chrome Finish

PIPE WRENCHES	
T11□	Preferred® Pipe Wrench

SCREWDRIVER BITS	
T12□	Hex Drive
T13□	Tamper Proof
T14□	Bit Holder
T50□	PHILLIPS Drive Bits
T51□	Magnetic Nutsetters
T52□	Slotted Drive Bits
T58□	Star Drive
T59□	Square Drive

PLIERS	
T15□	Preferred® High Leverage Heavy Duty Lineman's Pliers
T16□	Preferred® Straight Jaw Groove Joint Pliers
T17□	Preferred® Diagonal Cutting Pliers
T18□	Preferred® High Leverage Heavy Duty Diagonal Pliers
T19□	Preferred® Side Cutting Long Nose Pliers with Cutter
T20□	Preferred® Long Nose Pliers without Cutter
T21□	Preferred® Slip Joint Pliers
T22□	Preferred® Internal/External Snap Ring Pliers with Quick Switch Tips
T23□	Preferred® Locking Pliers
T24□	Crescent Curved Jaw Locking Plier

RIVETERS	
T01□	Hand-Operated Rivet Tool
T01□	Hand-Operated Lever Tool

**RIVETER KITS**

K04	Steel Deluxe Hand Riveter Kit
K04	Aluminum Deluxe Hand Riveter Kit

**SCREWDRIVERS**

T25□	Proferred® Acetate Cushion Grip
T26□	Proferred® Go-Thru
T27□	Proferred® Insulated (1000V)
T28□	Proferred® Acetate Screwdriver Sets
T29□	Proferred® Interchangeable Bit Screwdriver Sets

**HEX KEYS**

T34□	Proferred® T-Handle Hex Key Set
T35□	Proferred® Long Arm Ball Point Hex Key Set
T36□	Proferred® Short Arm Hex Key Set
T37□	Proferred® T-Handle Hex Key

**STAPLERS**

T40□	Proferred® Iron Staple Gun Tacker
T41□	Proferred® Hammer Tacker
T42□	Proferred® Staples (1.2mm Thick 10.6mm Wide)

**COMBO WRENCHES**

T44□	Proferred® Flex Ratcheting Combination Wrench Chrome Finish
T45□	Proferred® Combination Wrench Set
T46□	Proferred® Combination Wrench

**HAMMERS**

T49□	Proferred® Hammers
------	--------------------

**TAPE MEASURES**

T53□	Proferred® Tape Measure
------	-------------------------

**UTILITY KNIFES**

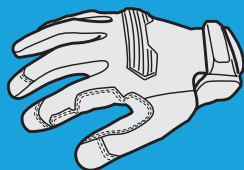
T54□	Proferred® Retractable Utility Knife
T55□	Proferred® Blade (12PC)

**HACKSAWS**

T56□	Proferred® Hacksaw Frame
T57□	Proferred® Hacksaw Blade

**SCREW GAUGES**

T98□	Proferred® Gauge (Inch & Metric)
------	----------------------------------



**SAFETY & CONSUMABLE**

**GLOVES**

M06□	Proferred® Cut Resistant Gloves
M07□	Armadillo Impact Orange with TPR Swirl Palm

**KNEE PADS**

M09□	Proferred® Gel Knee Pads
M09□	Ironclad® Kneeling Pad

**CABLE TIES**

M08□	Proferred® Bead Self-Locking 304 Stainless Steel
M10□	Proferred® Nylon 66 Natural
M11□	Proferred® Nylon 66 UV Rated Black

**LIGHTING**

M12□	Proferred® Flashlights
M12□	Proferred® LED Worklight
M12□	Proferred® Foldable LED Worklight

**RAIN GEAR & COVERS**

M13□	Proferred® Covers
M14□	Proferred® Rainwear

**EYE PROTECTION**

M15□	Safety Glasses ANSI Z87.1 Compliant
------	-------------------------------------

**EAR PROTECTION**

M17□	Proferred® Ear Protection
------	---------------------------

**SAFETY VESTS**

M18□	Proferred® High Visibility Vest
------	---------------------------------

**DUST MASKS**

M19□	Proferred® Mask
------	-----------------

**TAPES**

M20□	Proferred® Packaging Tape
M21□	Proferred® Duct Tape
M22□	Proferred® Blue Painters Tape
M23□	Proferred® Vinyl Electrical Tape
M24□	Proferred® Thread Sealing Tape
M25□	Proferred® Caution / Danger Tape

**ASSORTED SAFETY & CONSUMABLES**

M26□	Contractor Bags
M27□	Poly Sheets

**WIPES & TOWELS**

T99□	Proferred® Hand & Tool Wipes / Shop Towels / Lens Wipes
------	---

**ADHESIVES**

031□	Vibra-TITE® Threadlocker
032□	Super Glue

**WELDING CONSUMABLES**

WT1□	TIG Collet
WT2□	TIG Alumina Gas Lens
WT3□	TIG Gas Lens
WT4□	TIG Back Cap
WM1□	MIG Contact Tip
WM2□	MIG Nozzle
WM3□	MIG Insulator
WM4□	MIG Gas Diffuser
WM5□	MIG Liner



**IRONCLAD®**

G01□	Ironclad® Cold Condition Gloves
G02□	Ironclad® General Gloves
G03□	Ironclad® Knit Gloves
G04□	Ironclad® Welding Gloves
G05□	Ironclad® Redline Gloves
G06□	EXO® Gloves by Ironclad®
G07□	EXO® Tactical Gloves by Ironclad®
G08□	EXO® Cold Condition Gloves by Ironclad®
G09□	EXO® Mining Gloves by Ironclad®
G10□	Ironclad® Oil & Gas Gloves
G11□	KONG® Gloves by Ironclad®
G12□	Vibram® Gloves
G14□	Ironclad® Command™ Gloves
G15□	Ironclad® Golf Gloves
G16□	TOWA Chemical Gloves
G17□	Ironclad® Esports Gaming Gloves
G50□	Ironclad® Face Mask

**IRONCLAD®**

G60□	Ironclad® Hard Hat
G61□	Ironclad® Safety Glasses
G62□	Ironclad® Bump Cap
G18□	Ironclad® Protective Sleeve



**CLEANFIT® GLOVES**

M02□	CLEANFIT® Disposable Nitrile Gloves-Powder Free
------	---



I n d u s t r i a l F a s t e n e r s